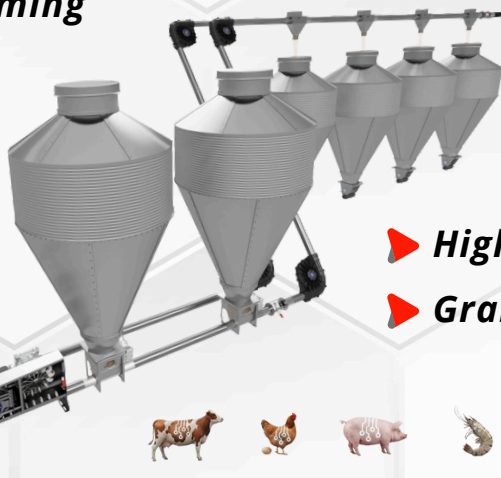


AUTOFEED 100

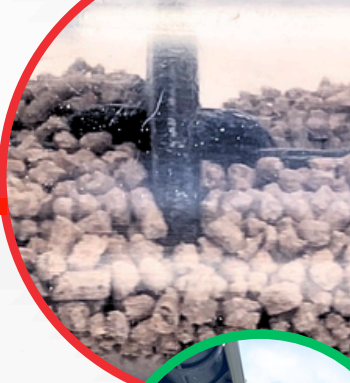
Automatic high capacity chain disk conveyor system

HIGH CAPACITY IN A GENTLE WAY

- ▶ **Essential for Biosecurity**
- ▶ **Low investment cost**
- ▶ **Less human errors**
- ▶ **Less labor cost**
- ▶ **Smart farming**



- ▶ **High capacity**
- ▶ **Grain & Feed**



AUTOFEED 100

GATE SILOS SYSTEM





FULL FEED LOGISTIC ON FARM

Modern farms are strategically designed to minimize the movement of people and animals over long distances. Due to space constraints, disinfection gates and biosecurity fences prevent trucks from entering the farm. The AutoFeed100 efficiently manages feed conveyor logistics, thanks to its high capacity and ability to handle long-distance transportation.



CHAIN
PRODUCTION



HEAT
TREATMENT



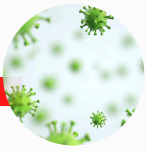
PLASTIC
INJECTION



SYSTEM
MOUNTING



SYSTEM
RUNNING



BIOSECURITY

The best investment to increase the biosecurity of your farm. The AutoFeed 100 is a high capacity and long distance feed conveyor system, ideal to transport the feed automatically into the farm, from the road to the barn silos.



AUTOFEED 100

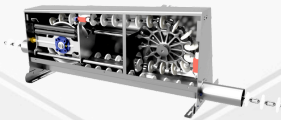
The high capacity chain disk in tube conveyor is a gentle way to transport bulk products like animal feed and grain over long distances in a gentle way.



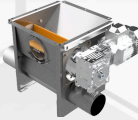
CHAINDISK



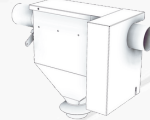
ECODRIVE UNIT



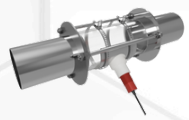
ROTORHOPPER



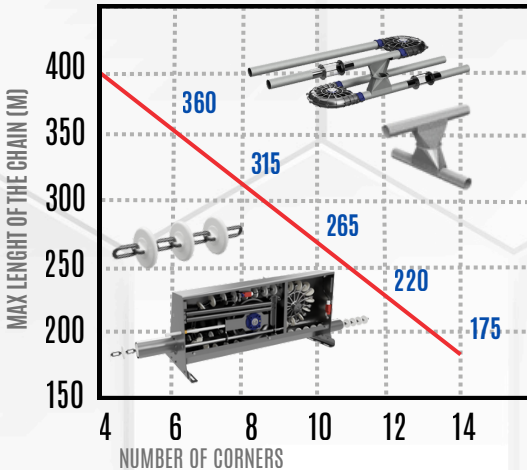
AUTODROP



INSPECTION



AUTOFEED 100 DESIGN DIAGRAM



60% FILLING 0.6 M/S CHAIN SPEED

4KW, 300M WITH 4 CORNERS,

UP TO 6500 KG/H

LESS THAN 1% PELLETS DAMAGE

ECOCHAIN 100

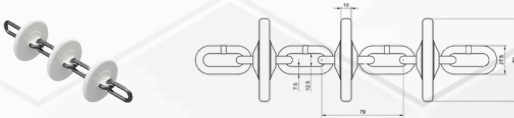
This disk conveyor chain is crafted from alloy steel, ensuring durability and exceptional overload resistance of over 6 tons. The disk features a unique symmetrical design, which, when paired with engineering plastics, allows it to withstand even the most demanding environments and applications.

Thanks to its short pitch and increased speed, it enables steeper vertical inclinations and quicker cleaning rates.

CHAIN D77

1.06.02.001

Chain with disks D77 mm with full injection for ChainLine 100; material: Alloy steel/PA



ECOCHAIN D77

1.06.02.020

Chain with disks D77 / P80 mm for ChainLine 100; material: Alloy steel/PA



CHAINLINK

1.06.02.200

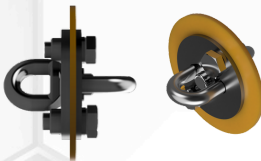
Chain link for ChainLine 100mm; material: Alloy steel



TURNLINK

1.06.02.046

The anti-twist for long chain lines; link 100 mm; material: Alloy steel and PUR





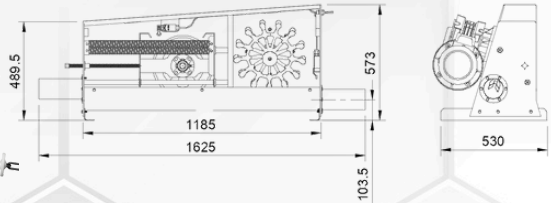
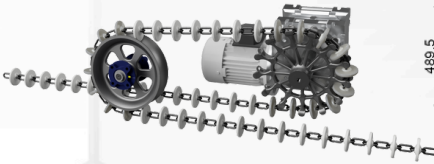
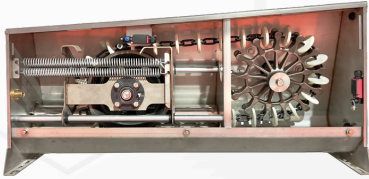
ECODRIVE 100

The unique direct drive technology allow us to run longer distances without the risk of breaking disks. Our drive wheel directly drives the chain and there is no contact with the disk.

ECODRIVE 100

1.06.01.001

Drive unit for CHAINLINE 100 mm; 4 kW 3Ph 400V Motor; material: Stainless steel body (AISI 304)
Weight: 170kg.



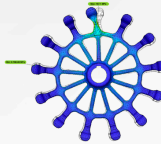
DRIVEWHEEL 100

1.06.01.130

Unibody drive wheel; material: Heat treated alloy steel



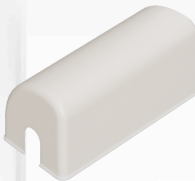
ECO DRIVE



RAINCOVER 100

1.06.01.150

Glass fiber rain cover ; color: White ; top ventilation window



ECOCORNER100

The Eco Corners are equipped with several high-performance features, including reinforced plastic, a metal idle wheel, durable outer bearings, and an integrated sealing and inspection lid. Additionally, they offer models designed for 90 and 180 degrees of installation, facilitating the straightforward setup of long Gate Silos systems.

ECOCORNER 100/90

1.06.04.001

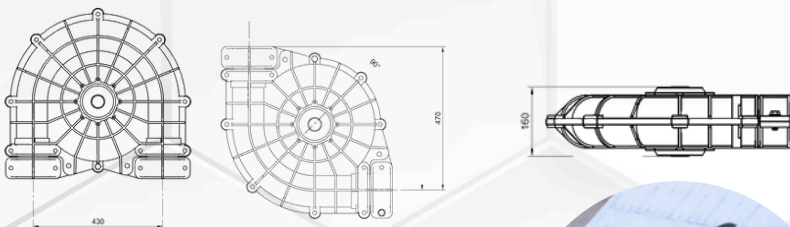
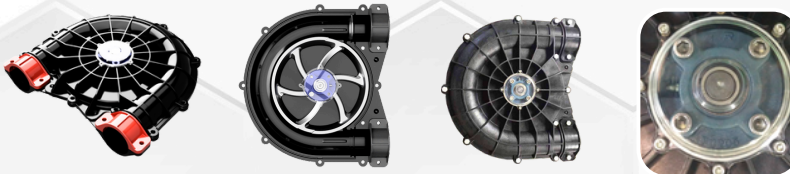
Corner for 90 degrees, waterproof with internal seals, with external bearing; Color: Black; With Temu logotype. Pallet packing 120x110x190mm, 700kg, 36 units. Weight per set: 20,8 Kg.



ECOCORNER 100/180

1.06.04.050

Corner for 180 degrees, with external bearing; waterproof with internal seals; Color: Black; With Temu logotype. Pallet packing 120x110x200mm, 700kg, 33 units. Weight per set: 20,8 Kg.



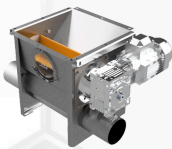
ROTORDOSER 100

The AutoFeed 100 features a significant innovation: a compact rotor dosing system. This system delivers feed or grain in a controlled manner, prevents overload, and functions effectively as a metering system.



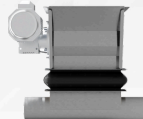
ROTORDOSER 100 1.06.05.100

Rotor hopper 100mm for precise dosing into the ChainLine 100 system; material: Stainless steel (AISI 304)



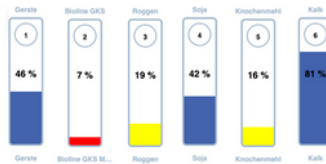
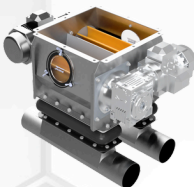
ROTORDOSER 100 FLEX 1.06.05.113

Rotor hopper 100mm with flexible connection; for precise dosing into the ChainLine 100 system; best choice for silos with load cells; material: Stainless steel (AISI 304)



ROTORDOSER 100 DUO FLEX 1.06.05.101

Double Rotor hopper 100mm with flexible connection; for precise dosing into the ChainLine 100 system; best choice for silos with load cells; material: Stainless steel (AISI 304)

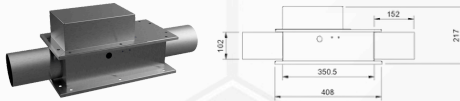


AUTODROP 100

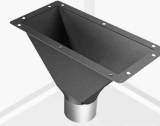
We cover a wide range of automatic or manual drop valves to bring the material to the right destination.

AUTODROP 100 E220 1.06.05.068

Electrical drop valve for ChainLine 100; power supply 220V; open/close end switch; main body: Stainless steel (AISI 304)

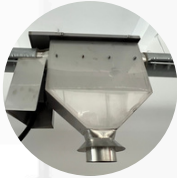


AUTODROP FUNNEL 100/100 1.06.05.291



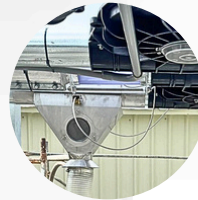
AUTODROP 100 E220 1.06.05.051

Electrical drop valve for ChainLine 100; power supply 220V; open/close end switch; main body: Stainless steel (AISI 304)



AUTODROP SPLIT 100 M 1.06.05.289

Manual drop valve for ChainLine 100; material: Stainless steel (AISI 304)



ROOFINPUT 100 1.06.05.064

Input connection between silo room and drop valve; for ChainLine



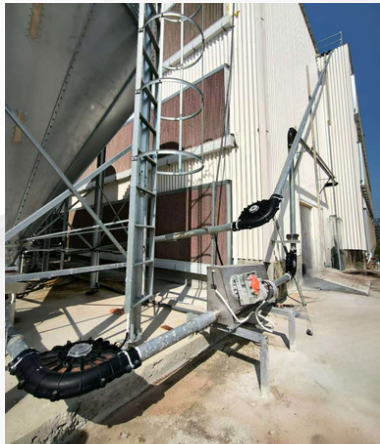
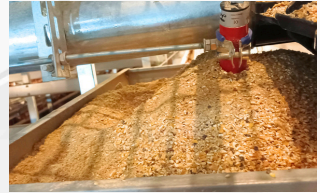
FLEXHOSE 100 1.06.05.056

Flexible hose PU for ChainLine





Special configuration with high abrasive resistant discs to handle the layers feed.

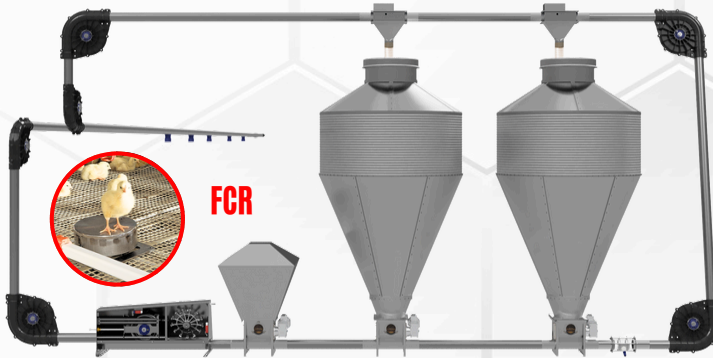




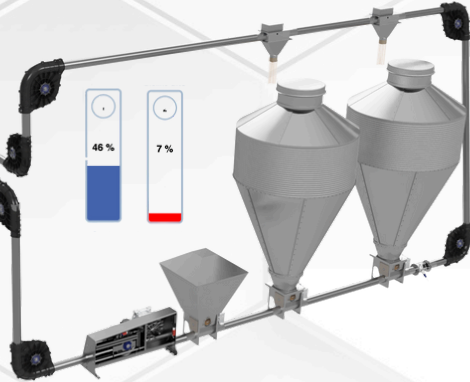
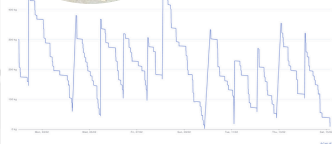
MULTI-TIER BROILER FARMS

To tackle challenges in high-density environments, a reliable and quick feed supply for cage lines is crucial, involving:

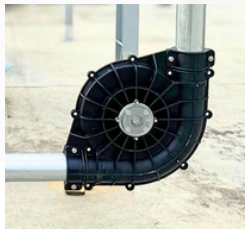
- Manual silo filling with bags
- Efficient feed return systems
- Smart automation with monitoring and alarm systems
- These solutions optimize operations in multi-tier broiler farms.



LOADCELLS



DRIVE UNIT OUTDOOR COVER



CORNER WITH SEALINGS

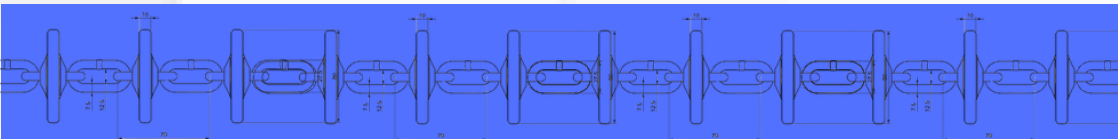
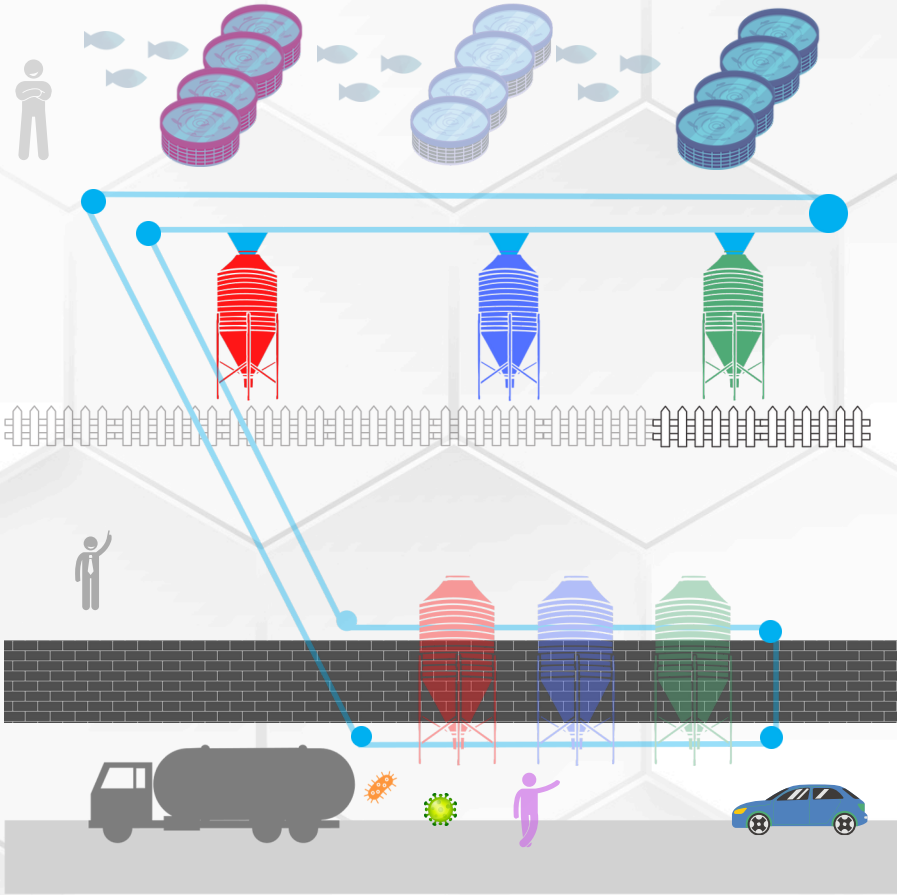


PIPE COUPLING AND HOPPER WITH SEALING



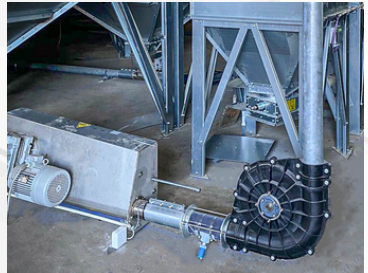
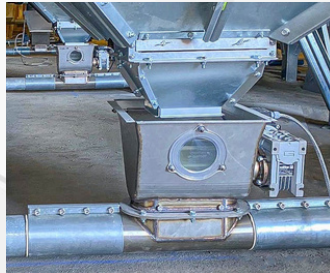
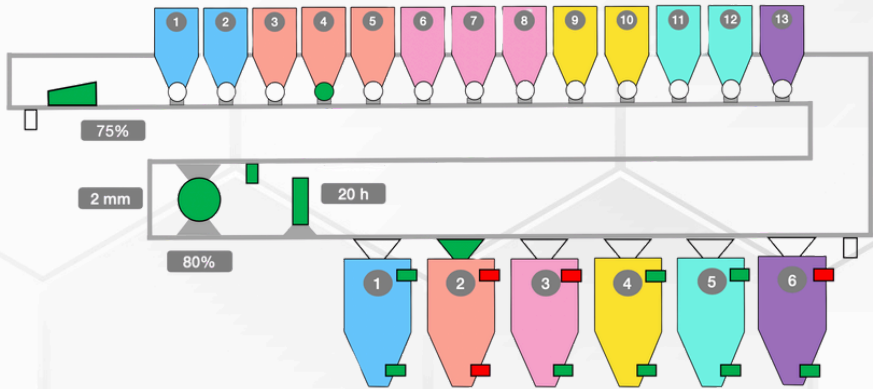
AQUACULTURE

Aquaculture gets more professional and the need to increase automation and biosecurity is increasing.





Due to the high flexibility of the configuration of the AutoFeed 100, smart layouts of compact feedmill systems are possible, saving time, less maintenance and adding simplicity.





STRAW & FIBER CONVEYOR

The AutoFeed 100 is, due its high volume conveyor, optimal to transport fiber materials like straw and TMR that are essential on the welfare of chicken, pigs and cattle.

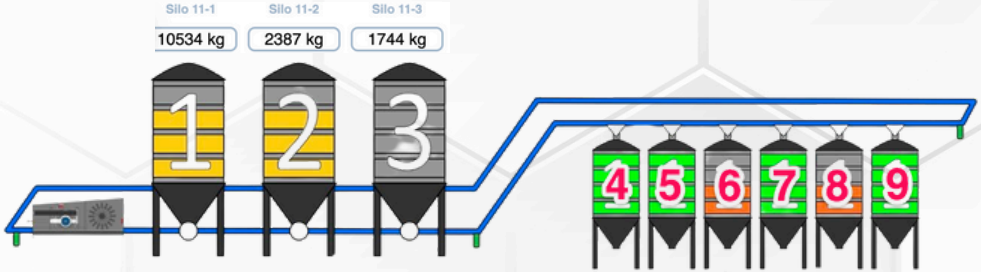


ANIMAL WELFARE





Oncon is an automation platform that can handle many different configurations, like the AutoFeed 100. From semi-manual, fully automatic, portion, multiphase and silo scales. Oncon is a modular PLC system that can easily be scaled and can handle larger systems while the amount of cable is minimized due the use of a canbus system.



Complete farm automation platform to control and automate all aspects of a modern livestock farming.

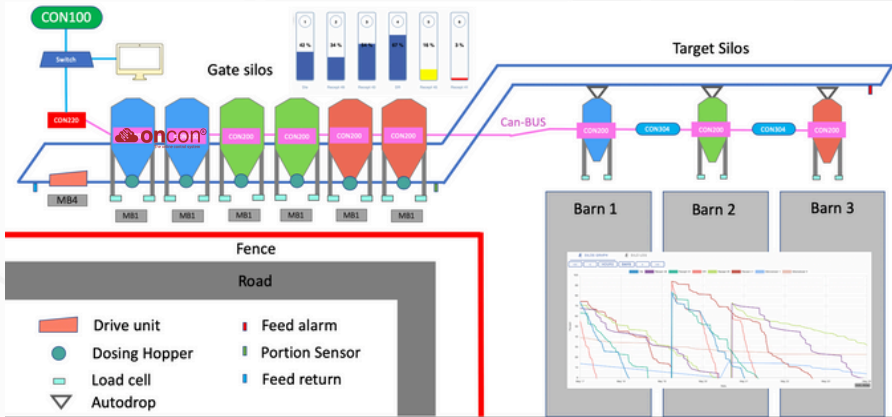


Always online





SMART GATE SILOS






AUTOFEED 100



 **Stadtlohn - Germany**

 **marcio@temu.eu**